

Visit [CNPS.org/gardening](https://www.cnps.org/gardening) to learn more!

Give your new CA native landscape a healthy start by following our online planting and watering guides.

Planting and Watering

- Use permeable surfaces wherever possible to allow water to soak in to the soil below.
- Stepping stones
- Permeable paving (at least 1/4" between pavers)
- Decomposed granite (DG)
- Gravel

Mulch

- Retain moisture, feed your soils, and insulate your plants from heat and cold.
- Use organic, weed free, well-composted mulch with a fine to medium texture.
- Apply after planting, and in late spring and early fall.
- AVOID wood chips, large pieces of bark mulch, and synthetic materials. They deprive your soil and plants of nutrients.
- AVOID weed cloths, plastic, and other weed barriers. They prevent the natural cycle of nutrients through the soils, can kill the living biology in your soil, and are often ineffective at preventing weeds.

Soil Amendment

- Many native plants thrive in what we consider poor soil conditions!
- Add organic compost or worm castings to promote healthy soil.
- AVOID chemical fertilizers and other amendments.
- Layers of cardboard and mulch deprive grass of light.
- Layers of compost or worm castings to promote healthy soil.
- Visit [CNPS.org/gardening](https://www.cnps.org/gardening) for more information!

Grass Removal

- Still need to get rid of your lawn? Try sheet mulching!

Living Soil



Garden plans and watercolor courtesy of Kathleen Catton, Feochadan Land Design. Graphic illustrations by Randi Gunder, Goldenscape Designs.

The California Native Plant Society is a statewide non-profit organization with 35 local chapters dedicated to the conservation and enjoyment of California's native plants and places.



- Add a bird bath, fountain or other water tool
- Pollinators, birds, and wildlife need water too!
- Our ground dwelling, native bees need habitat! These bees are not aggressive, and will help keep your landscape flourishing!
- Leave a few sunny areas of your landscape mulch free.
- Add organic compost or worm castings to promote healthy soil.
- AVOID chemical fertilizers and other amendments.
- Retain moisture, feed your soils, and insulate your plants from heat and cold.
- Use organic, weed free, well-composted mulch with a fine to medium texture.
- Apply after planting, and in late spring and early fall.
- AVOID wood chips, large pieces of bark mulch, and synthetic materials. They deprive your soil and plants of nutrients.
- AVOID weed cloths, plastic, and other weed barriers. They prevent the natural cycle of nutrients through the soils, can kill the living biology in your soil, and are often ineffective at preventing weeds.

Create a Habitat



BRING YOUR DESIGN TO LIFE



CALIFORNIA
NATIVE PLANT SOCIETY
San Diego Chapter
San Diego and Imperial
Counties

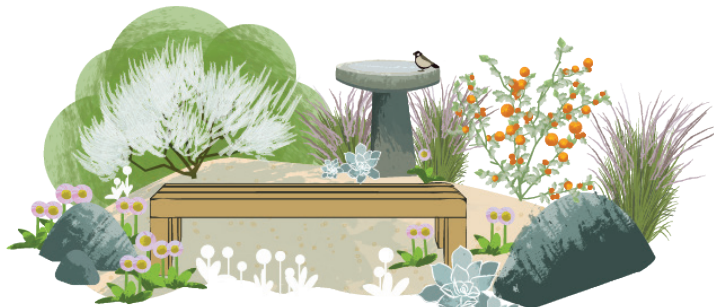
Native Landscape Planting Guide

Starting a native plant garden doesn't have to be complicated. This easy guide takes the guesswork out of which plants to use where. Simply choose one of the garden vignettes below and select from recommended native plants listed on the inside of your guide.

- ✓ Low Water Use
- ✓ Pollinator Friendly
- ✓ Locally Native

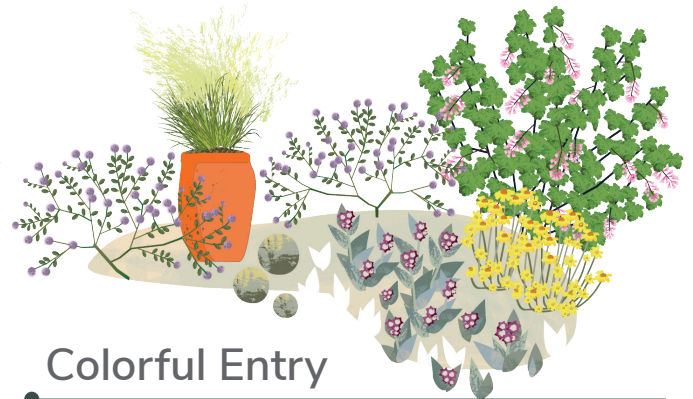
CHOOSE YOUR DESIGN

Five Easy Project Ideas for your Garden



Homey Habitat

Featuring a bench and bird bath, you can take a seat in this habitat and enjoy all of the bustling activity in your yard!
Features: bench, bird bath, boulders.



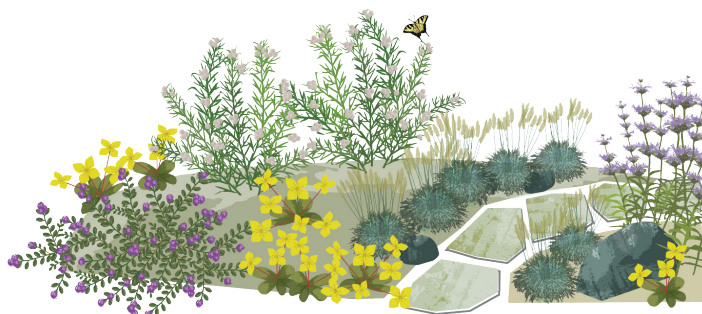
Colorful Entry

Make a statement in your entryway! Be sure to choose plants with a variety of colors.
Features: large pot, decorative round stones.



Wildlife Walkway

Take a stroll through your landscape. Use permeable materials for your pathway, such as stepping stones or decomposed granite.
Features: permeable walkway, large boulders.



Pollinator Park

Add excitement to the parkway strip along your driveway by adding plants that butterflies and other pollinators love.
Features: stepping stones and contrasting colors.



Living Wall

Designing your space vertically can add life to your yard. Use bold colors, and interesting shapes to make a flat area stand out.
Features: rain chain, swale, trellis.

▶ CHOOSE YOUR PLANTS

Vignettes Outlined By Color

Pollinator
Park

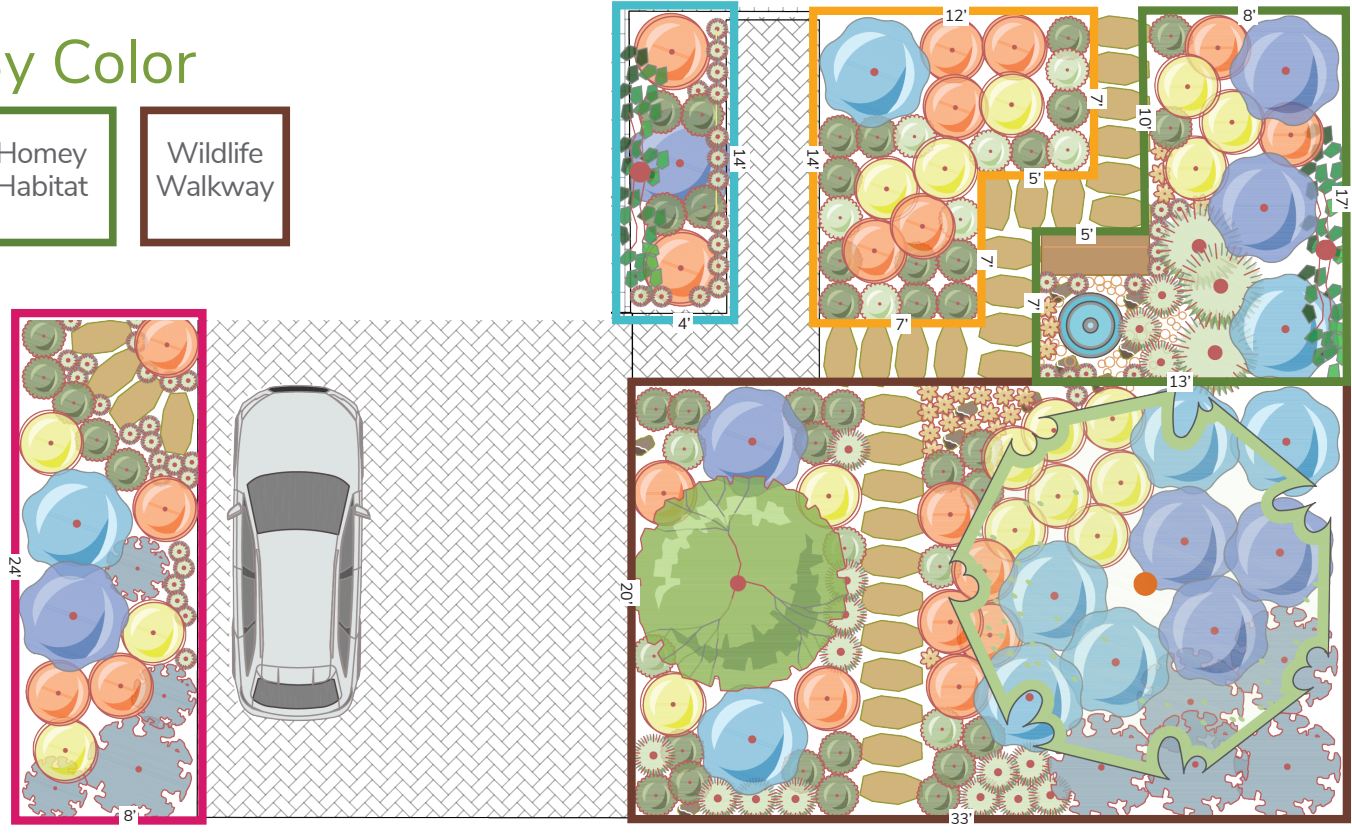
Living
Wall

Colorful
Entry

Homey
Habitat

Wildlife
Walkway

1. Choose the design vignette that best fits the shape and size of your site.
2. Match the symbols with those in the plant list.
3. Select plants based on your site's sun exposure.
4. Bonus points for choosing locally native plants!



California Native Plant List San Diego Chapter - San Diego and Imperial Counties

SYMBOL	PLANT SPECIES	LOCAL	SUN	WATER	H/W	COLOR	WILDLIFE	
TREES								
	Western Redbud / <i>Cercis occidentalis</i>	Y	☀☀	💧💧	10-20' 10-12'	●	🦋	
	Desert Willow / <i>Chilopsis linearis</i>	Y	☀☀	💧💧	10-20' 15'	●●●	🦋	
	Desert Olive / <i>Forestiera pubescens</i>	N	☀☀	💧	10' 8-10'	●●	🦋	
	Scrub Oak / <i>Quercus berberidifolia</i>	Y	☀	💧	12' 8'	●●	🦋	
LARGE SHRUBS								
	Woolyleaf Ceanothus / <i>Ceanothus tomentosus</i>	Y	☀☀	💧	6-12' 8+	●●	🦋	
	San Diego Mountain Mahogany / <i>Cercocarpus minutiflorus</i>	Y	☀☀☀	💧💧	6-15' 6-10'	●●●	🦋	
	Island Bush Poppy / <i>Dendromecon harfordii</i>	N	☀☀☀	💧💧	6-15' 10-15'	●●	🦋	
	Coffeeberry / <i>Frangula californica</i>	Y	☀☀☀	💧💧	to 15' 5-15'	●	🦋	
	Toyon / <i>Heteromeles arbutifolia</i>	Y	☀☀☀	💧💧	8-15' 10-15'	●	🦋	
	Laurel Sumac / <i>Malosma laurina</i>	Y	☀☀☀	💧	8-15' 12+	●	🦋	
	Hollyleaf Cherry / <i>Prunus ilicifolia</i>	Y	☀☀☀	💧	3-20' 10+	●	🦋	
	Lemonade Berry / <i>Rhus integrifolia</i>	Y	☀☀☀	💧	5-15' 10'	●	🦋	
MEDIUM SHRUBS								
	Palmer's Indian Mallow / <i>Abutilon palmeri</i>	Y	☀☀	💧	3-5' 3-5'	●●	🦋	
	Ian Bush Manzanita / <i>Arctostaphylos densiflora</i> 'Ian Bush'	N	☀☀☀	💧	3-6' 3-6'	●	🦋	
	Pajaro Manzanita 'Paradise' / <i>Arctostaphylos</i> 'Paradise'	N	☀☀☀	💧	3-6' 3-6'	●	🦋	
	Thickleaf Yerba Santa / <i>Eriodictyon crassifolium</i>	Y	☀☀☀	💧	5-8' 3-5'	●	🦋	
	Bladderpod / <i>Peritoma arborea</i>	Y	☀☀☀	💧	3' 6'	●	🦋	
	Hollyleaf Redberry / <i>Rhamnus ilicifolia</i>	Y	☀☀☀	💧	6' 6'	●	🦋	
	White Sage / <i>Salvia apiana</i>	Y	☀☀☀	💧	5' 3-8'	●	🦋	
	Pozo Blue Cleveland Sage / <i>Salvia clevelandii</i> 'Pozo Blue'	Y	☀☀	💧	3-4' 3-6'	●	🦋	
	SMALL SHRUBS							
	San Diego Sunflower / <i>Bahiopsis laciniata</i>	Y	☀☀	💧	3' 3'	●	🦋	
	Santa Cruz Island Buckwheat / <i>Eriogonum arborescens</i>	N	☀☀☀	💧	2-3' 2-5'	●●	🦋	
	Island Bush Snapdragon / <i>Gambelia speciosa</i>	N	☀☀☀	💧	2-3' 3-5'	●●	🦋	
	Chaparral Yucca / <i>Hesperoyucca whipplei</i>	Y	☀☀☀	💧	3' 3'	●●	🦋	
	Desert Globe Mallow / <i>Sphaeralcea ambigua</i>	Y	☀☀☀	💧	3' 3'	●●	🦋	
	Woolly Blue Curls / <i>Trichostema lanatum</i>	Y	☀☀	💧	3' 4'	●●	🦋	
	California Sunflower / <i>Encelia californica</i>	Y	☀☀	💧	3-4' 3-4'	●●	🦋	
	Coastal Goldenbush / <i>Isocoma menziesii</i>	Y	☀☀	💧	2-3' 3'	●	🦋	
	California Four o'clock / <i>Mirabilis laevis</i> var. <i>crassifolia</i>	Y	☀☀☀	💧	2' 3'	●●	🦋	
	De la Mina Lilac Verbena / <i>Verbena lilacina</i> 'De la Mina'	N	☀☀☀	💧	3' 4'	●	🦋	
	LOW SHRUBS							
	Yankee Point Ceanothus / <i>Ceanothus</i> 'Yankee Point'	N	☀☀☀	💧💧	2-3' 6'	●	🦋	
	Seaside Daisy / <i>Erigeron glaucus</i>	N	☀☀☀	💧💧	1' 2'	●●	🦋	
	Margarita BOP Penstemon / <i>Penstemon</i> 'Margarita BOP'	N	☀☀☀	💧💧	2' 2'	●●	🦋	
	California Fuchsia / <i>Epilobium canum</i>	Y	☀☀	💧	1' 2-3'	●	🦋	
	Golden Yarrow / <i>Eriophyllum confertiflorum</i>	Y	☀☀☀	💧💧	1-2' 2-3'	●	🦋	
	California Poppy / <i>Eschscholzia californica</i>	Y	☀☀☀	💧💧	1' 1'	●	🦋	
	Blue Eyed Grass / <i>Sisyrinchium bellum</i>	Y	☀☀☀	💧	1' 0.5'	●	🦋	
	Coast Aster Point St. George / <i>Symphotrichum</i> 'Point St. George'	N	☀☀	💧	1-2' 3'	●	🦋	
	SPREADING GROUNDCOVER							
		Carmel Sur Manzanita / <i>Arctostaphylos</i> 'Carmel Sur'	N	☀☀☀	💧	1-2' 6'	●	🦋
Montara Sagebrush / <i>Artemisia californica</i> 'Montara'		Y	☀☀☀	💧	1-2' 4'	●	🦋	
Dwarf Coyote Bush / <i>Baccharis pilularis</i> 'Pigeon Point'		Y	☀☀☀	💧	1-2' 5'	●	🦋	
GRASSES								
	Purple Three Awn / <i>Aristida purpurea</i>	Y	☀☀	💧	2' 1'	●	🦋	
	Deer Grass / <i>Muhlenbergia rigens</i>	Y	☀☀☀	💧	3' 3'	—	🦋	
SUCCULENTS								
	Fingertips / <i>Dudleya edulis</i>	Y	☀☀☀	💧	6-10" 1'	●●	🦋	
	Lanceleaf Liveforever / <i>Dudleya lanceolata</i>	Y	☀☀☀	💧	2' 1'	●●	🦋	
VINES								
	Island Morning Glory / <i>Calystegia macrostegia</i>	N	☀☀☀	💧	Climbing 20'	●	🦋	
	Western Virgin's Bower / <i>Clematis ligusticifolia</i>	Y	☀☀☀	💧	Climbing 20+	●	🦋	
	Desert Wild Grape / <i>Vitis girdiana</i>	Y	☀☀☀	💧	Climbing 20'	●	🦋	

SUN

☀ Full Sun
☀☀ Part Sun
☀☀☀ Shade

WATER

💧 Very Low
💧💧 Low
💧💧💧 Medium

Plants on this list have been carefully selected by your local San Diego Chapter.



CALIFORNIA
NATIVE PLANT
SOCIETY

Visit
Calscape.org
to find more
plants native to
your area.